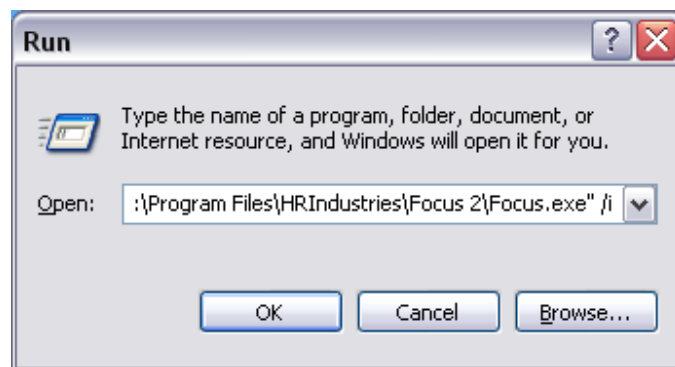


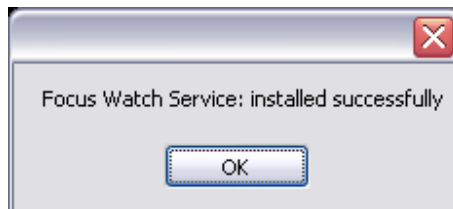
Installing the Focus Watch Service

Open the *Run* box. Run focus with the */i* argument:

"C:\Program Files\HRIndustries\Focus 2\Focus.exe" /i

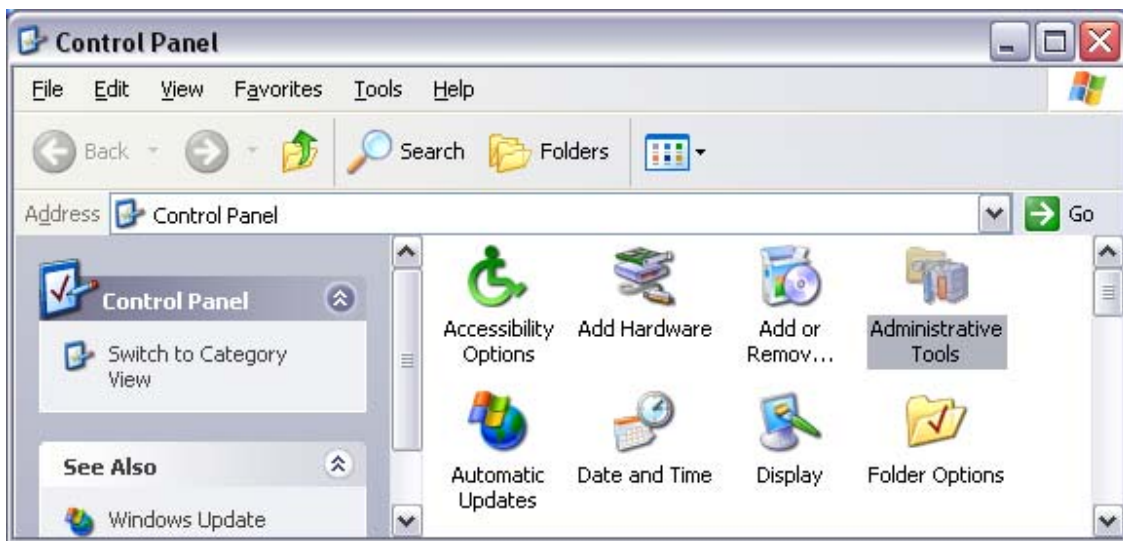


You should get this message:

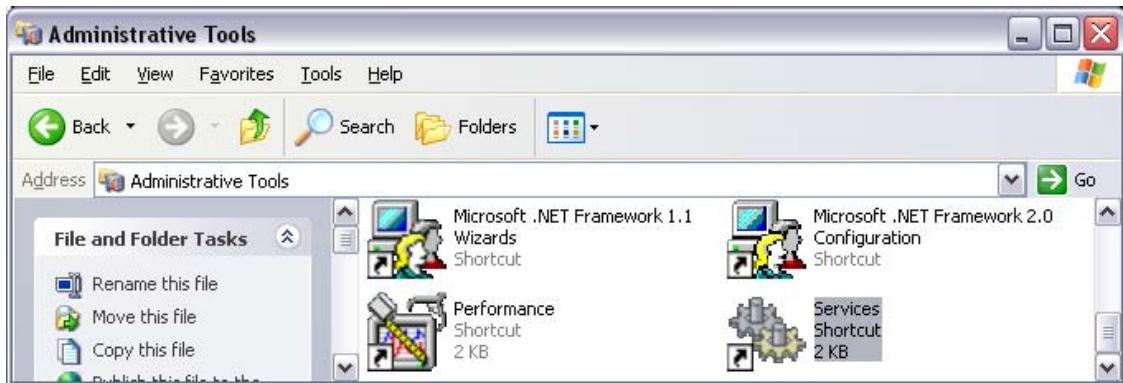


Focus will also start.

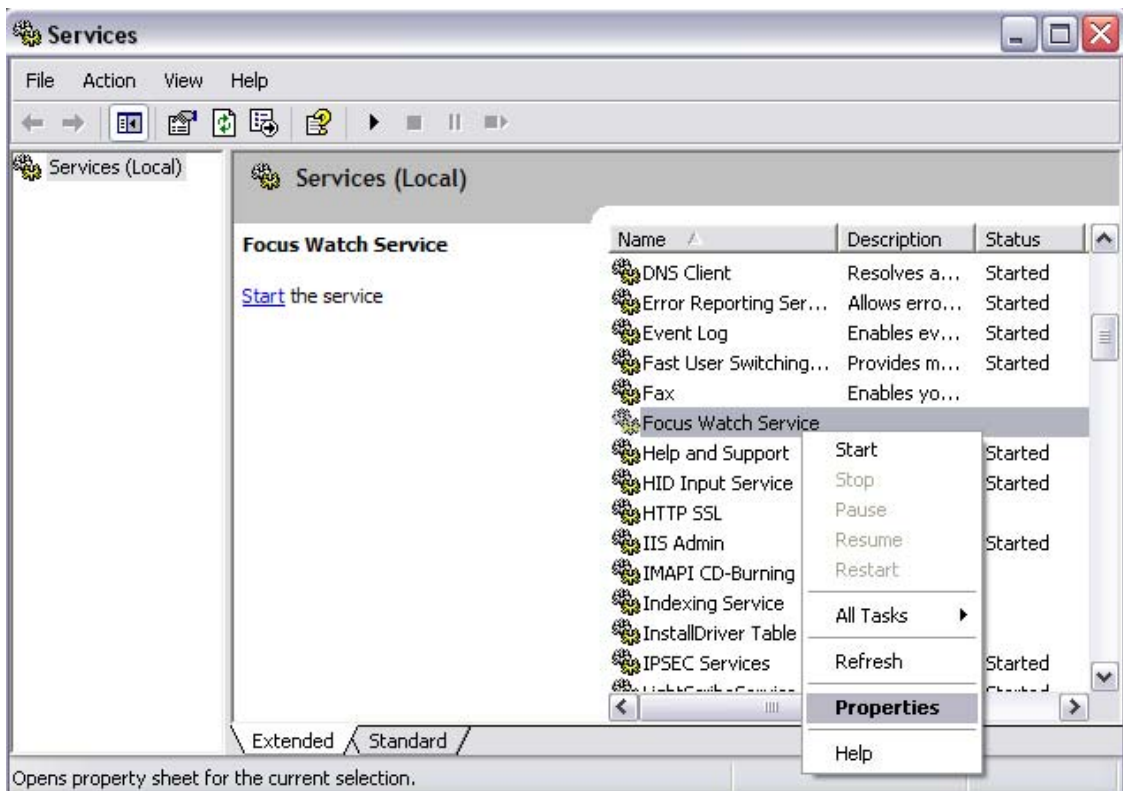
Open *Control Panel* > *Administrative Tools*:



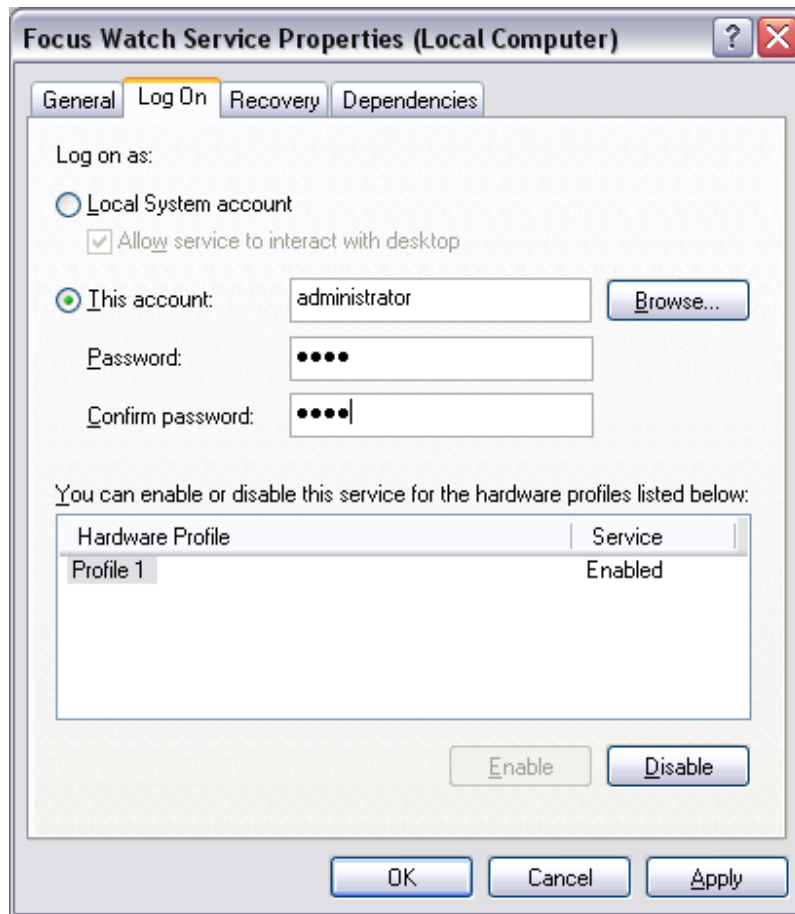
Open *Services*:



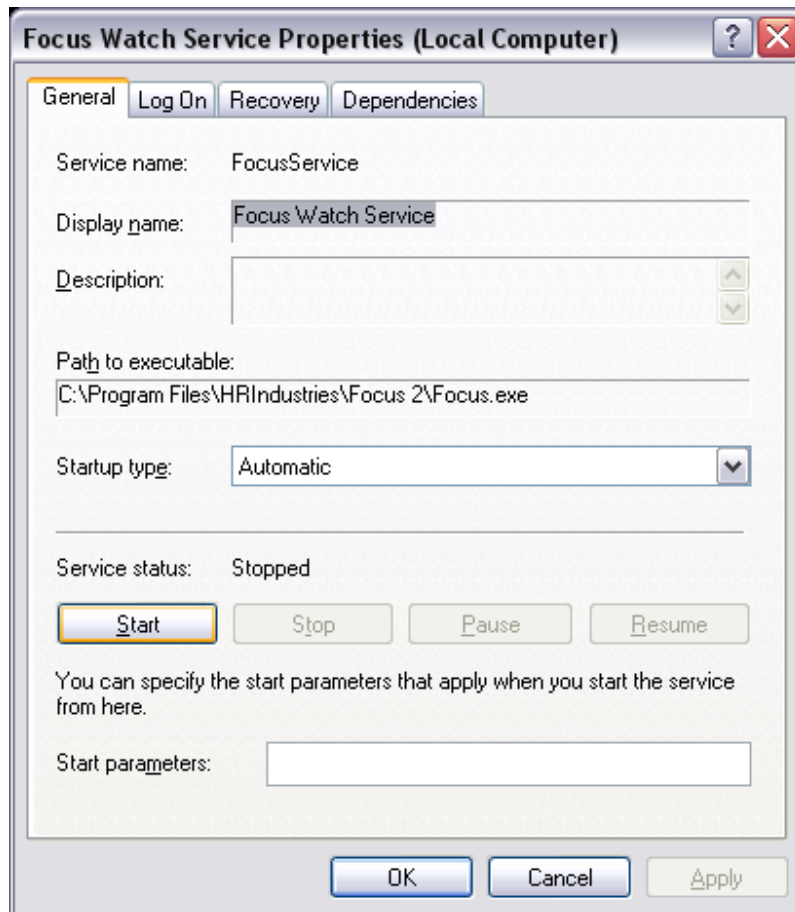
Right-click on the *Focus Watch Service* and click *Properties*.



In the *Log On* tab, provide a windows account name and password. Click *Apply*



In the *General* tab, click *Start* to start the service. If *Startup* type is set to *Automatic*, it will also start when you reboot the computer.



05/02/08