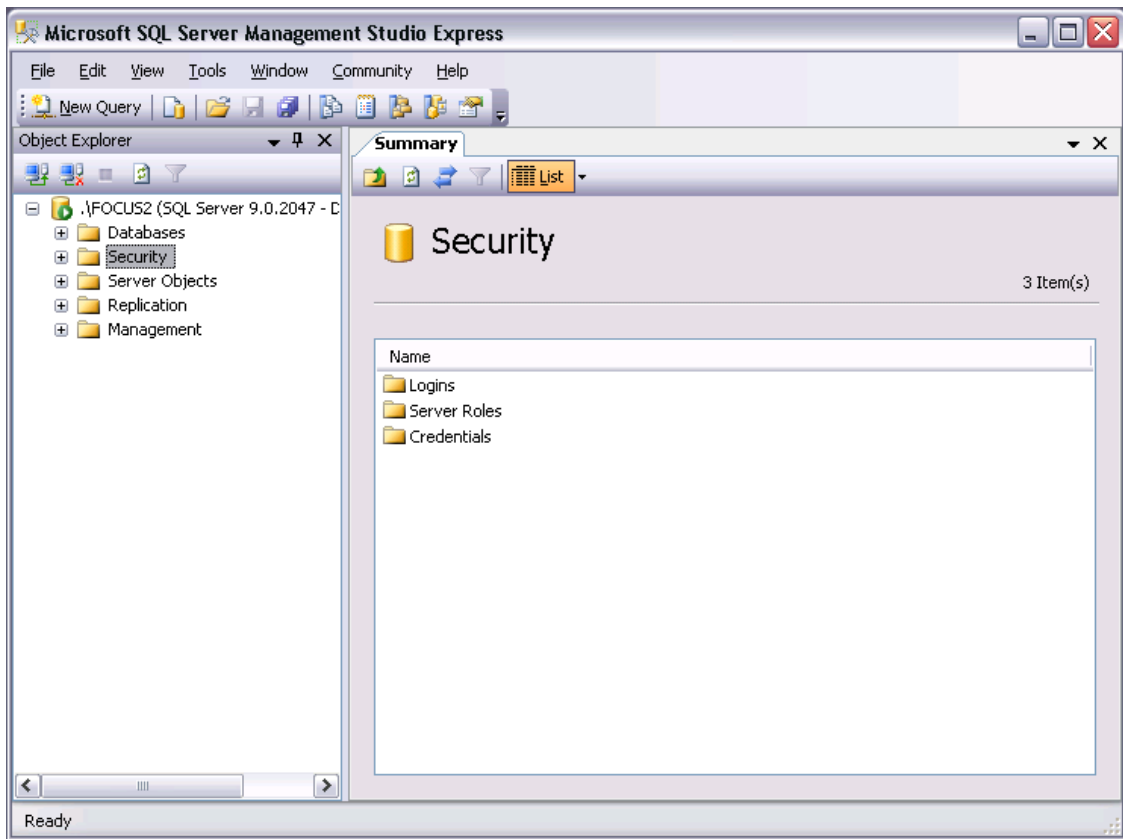
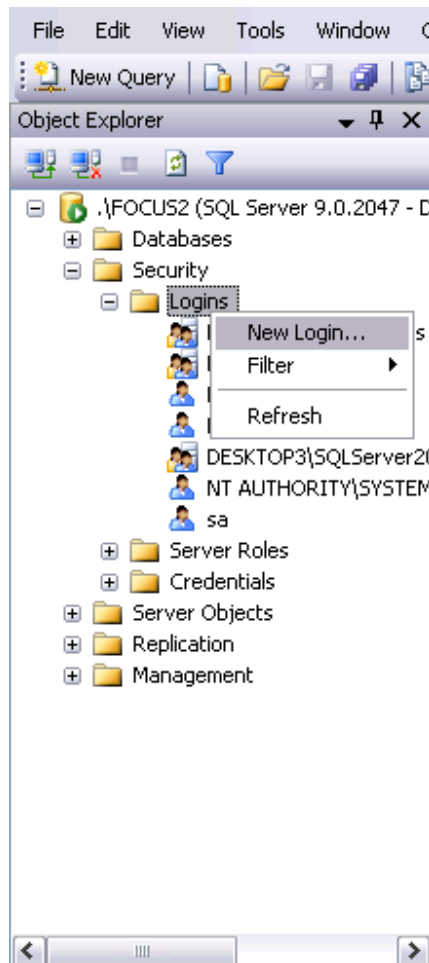


Installing Focus on existing server

1. Open SQL Manager and log in:



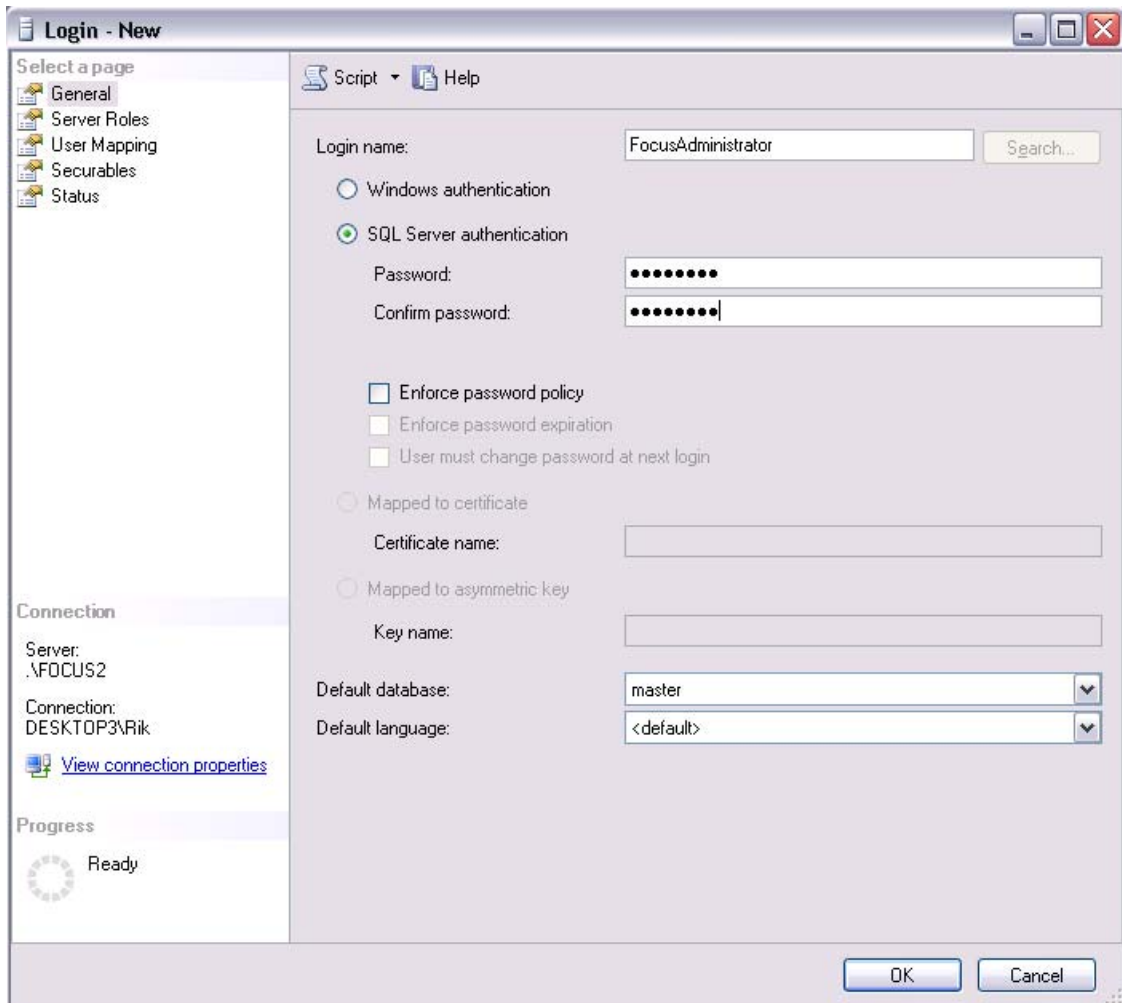
2. Add a login to the database:



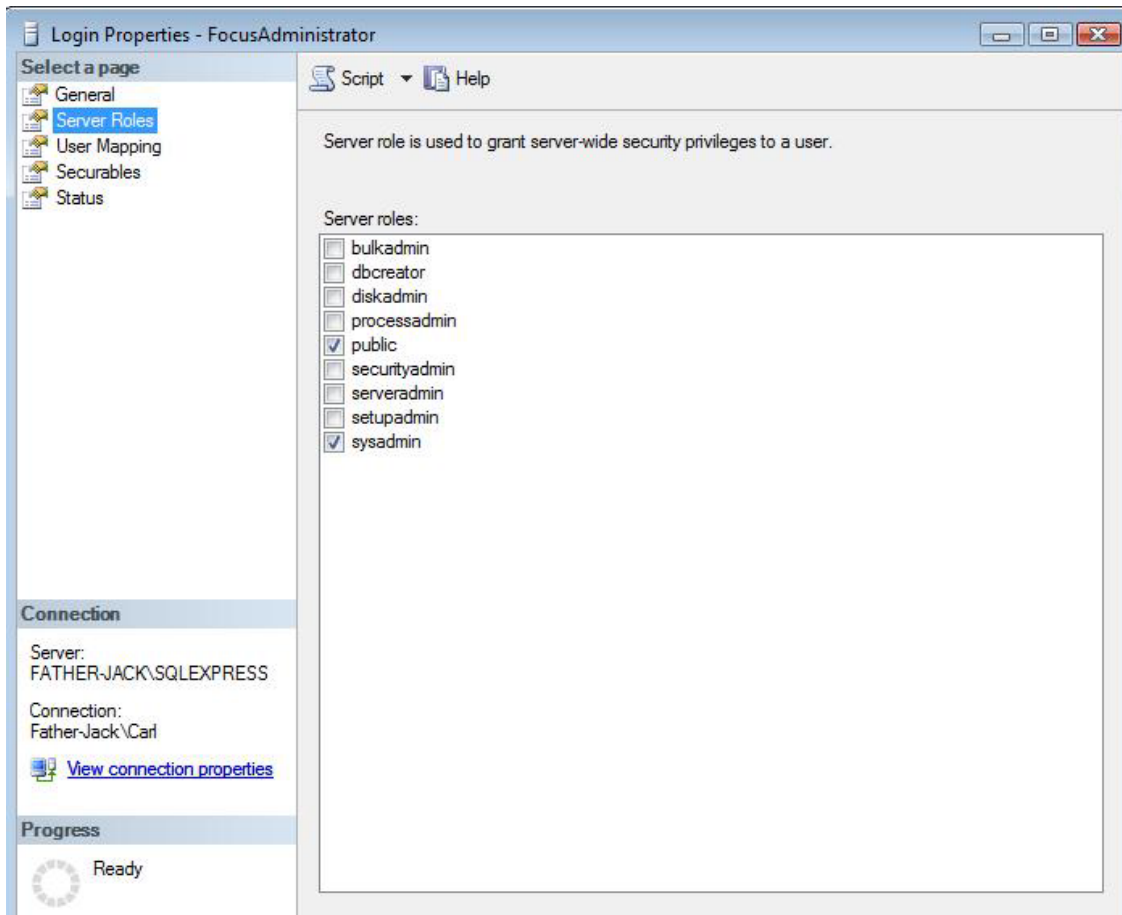
3. Use the name **FocusAdministrator**:



4. Choose your own password and disable password policy:

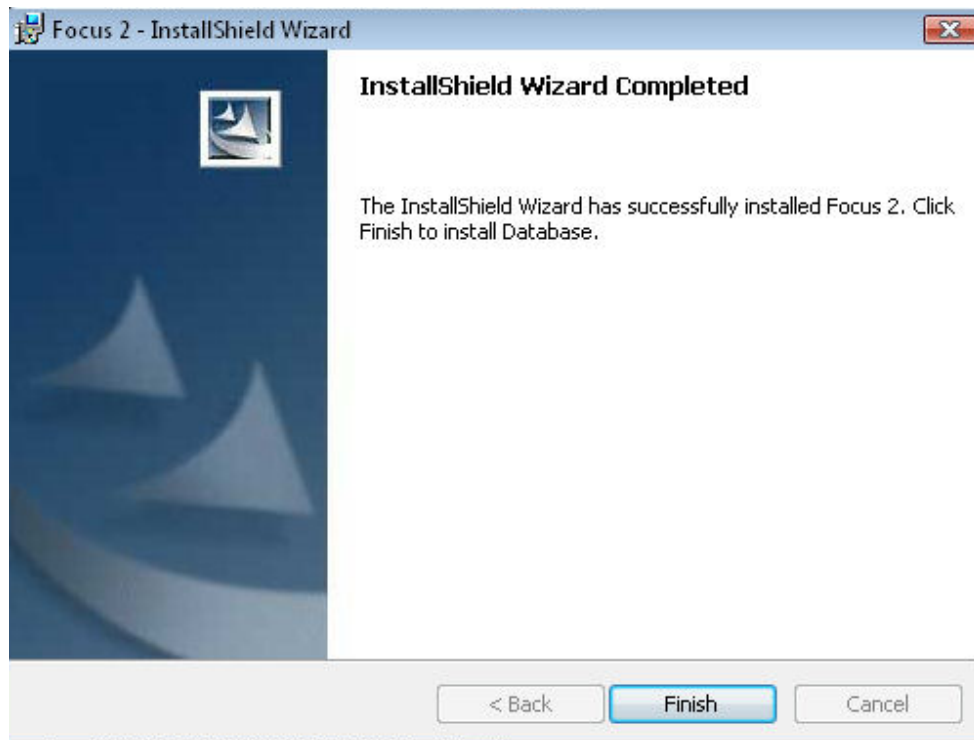


5. Click *Server Roles* and select **dbcreator**. Click *OK*

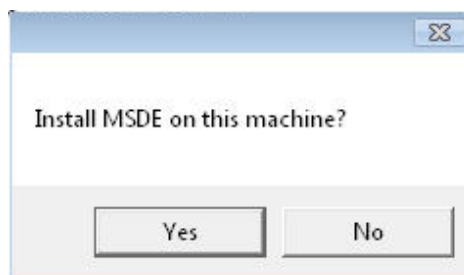


11/03/08

The next step is to install Focus onto the computer where it is to be used.

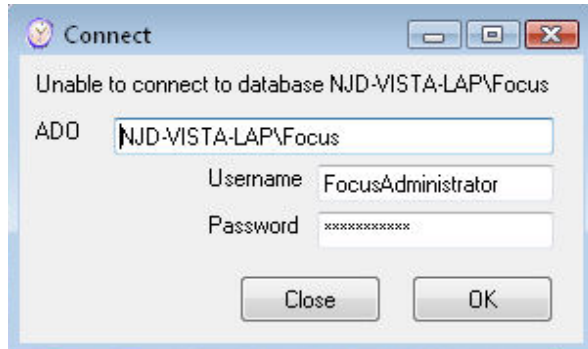


After this process it will ask if you want to install the MSDE database engine.



Say **No** to this.

When you run Focus for the first time from the shortcut on the desktop, an ADO box will appear:



Enter the SQL server instance name followed by *\Focus* (e.g. SQLEXPRESS\Focus). The *Username* should be **FocusAdministrator** and the *Password* should be whatever was set-up for that user.

You have now set-up Focus to work with an existing server.

NJD 12/03/2008