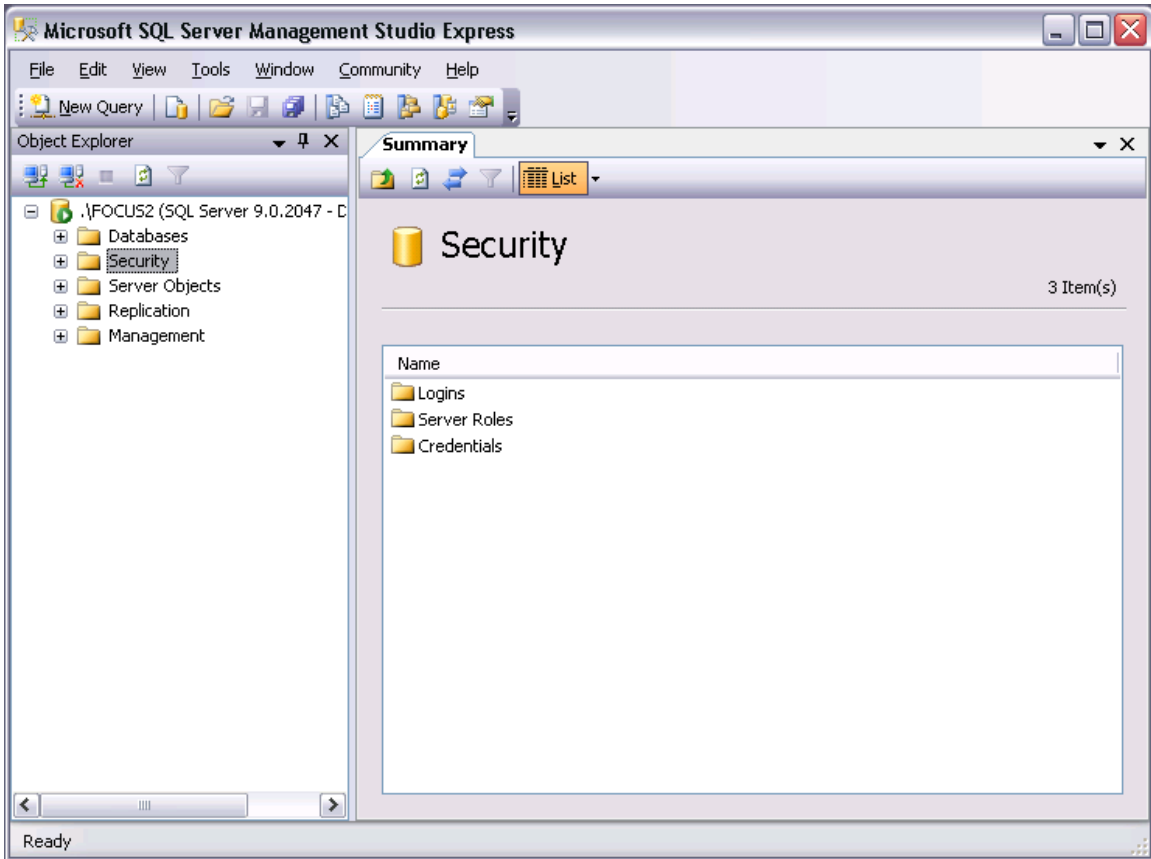
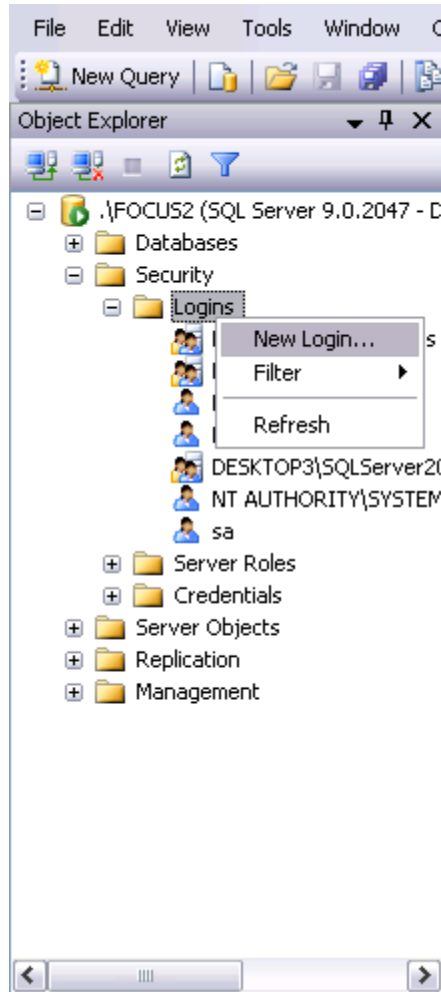


Installing Focus on existing server

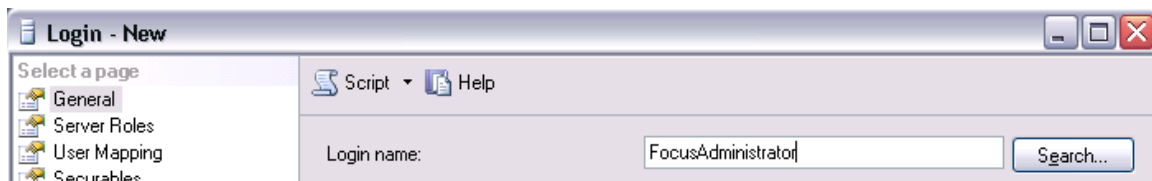
1. Open SQL Manager and log in:



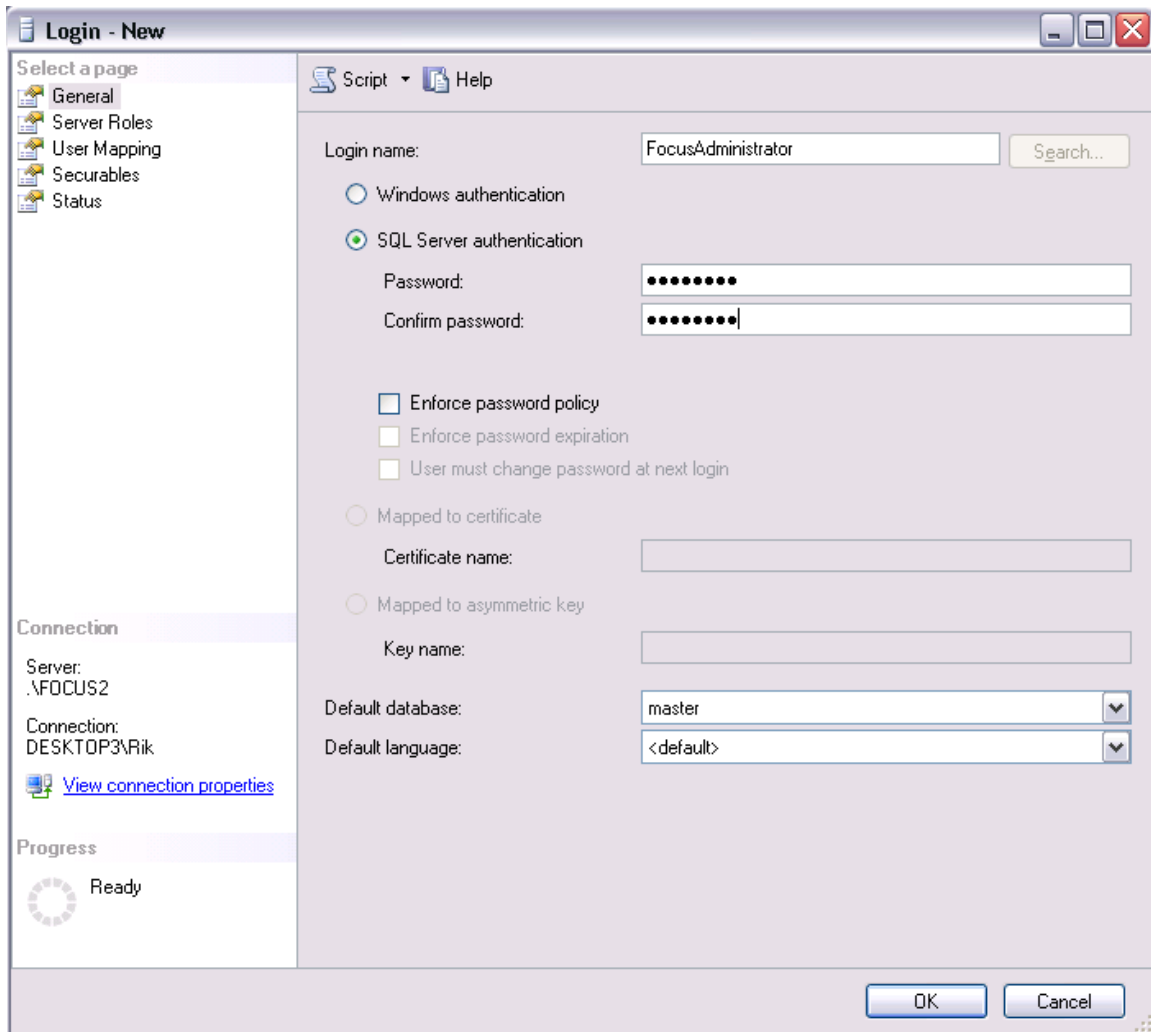
2. Add a login to the database:



3. Use the name **FocusAdministrator:**



4. Choose your own password and disable password policy:



The screenshot shows the 'Login - New' dialog box with the following configuration:

- General** (selected page)
- Script: Help:
- Login name: FocusAdministrator (with Search... button)
- Windows authentication
- SQL Server authentication
 - Password: [masked]
 - Confirm password: [masked]
 - Enforce password policy
 - Enforce password expiration
 - User must change password at next login
- Mapped to certificate
 - Certificate name: [empty]
- Mapped to asymmetric key
 - Key name: [empty]
- Default database: master (dropdown)
- Default language: <default> (dropdown)

Connection

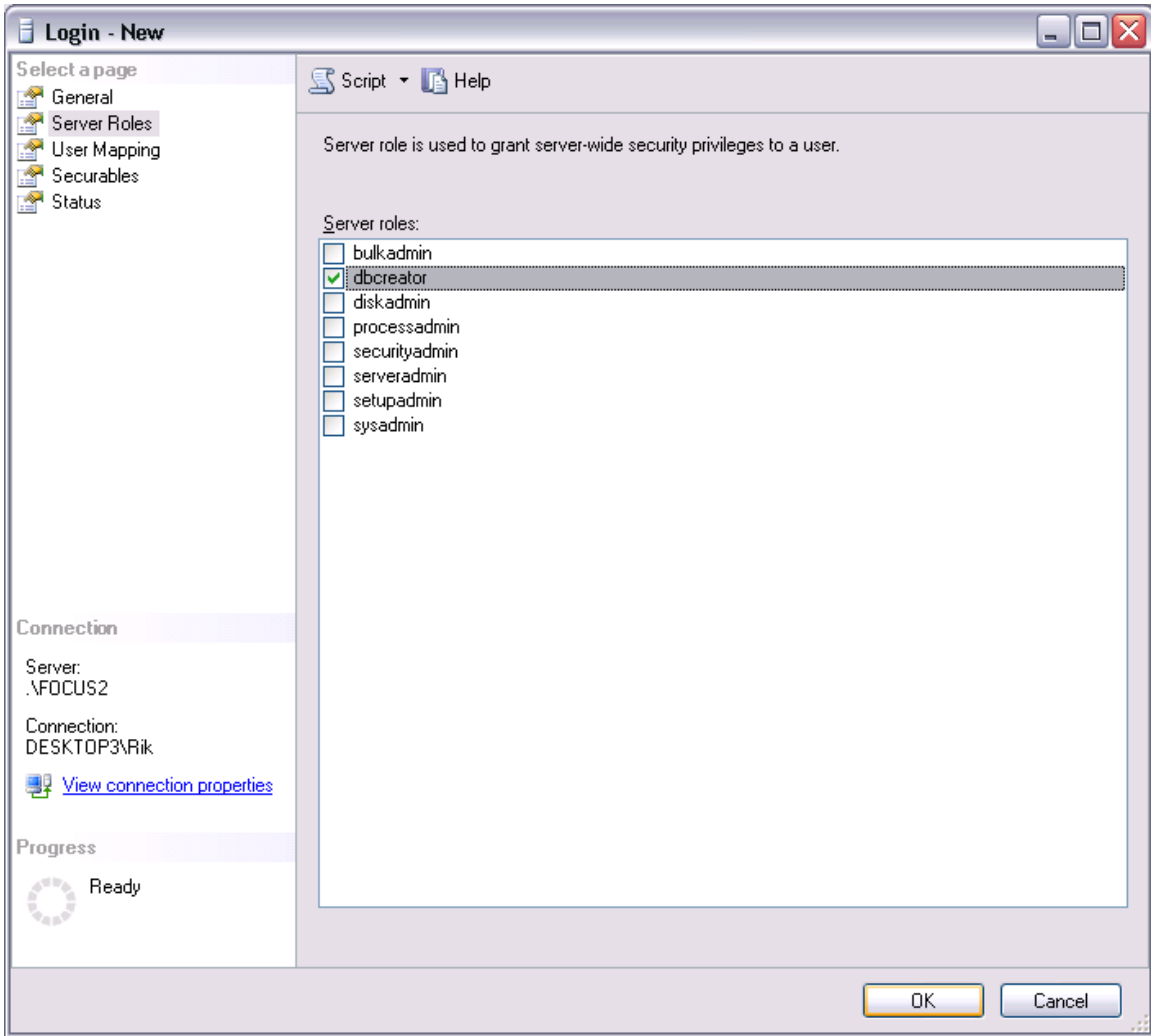
- Server: .\FOCUS2
- Connection: DESKTOP3\Rik
- [View connection properties](#)

Progress

- Ready

Buttons: OK, Cancel

5. Click *Server Roles* and select **dbcreator**. Click *OK*



05/02/08