

---

**Focus BST and GMT daylight saving settings  
for HRX1000, HRX3000 and HRX5000 proximity card terminals**

The HRX master terminal will normally update its BST and GMT settings automatically as each new daylight saving date is reached. However there are some circumstances when the settings may be incorrect – following a firmware upgrade for example.

We recommend that the settings are checked and adjusted, during the run up to each daylight saving date. Information about these dates can be found at:  
<http://www.greenwichmeantime.com/>

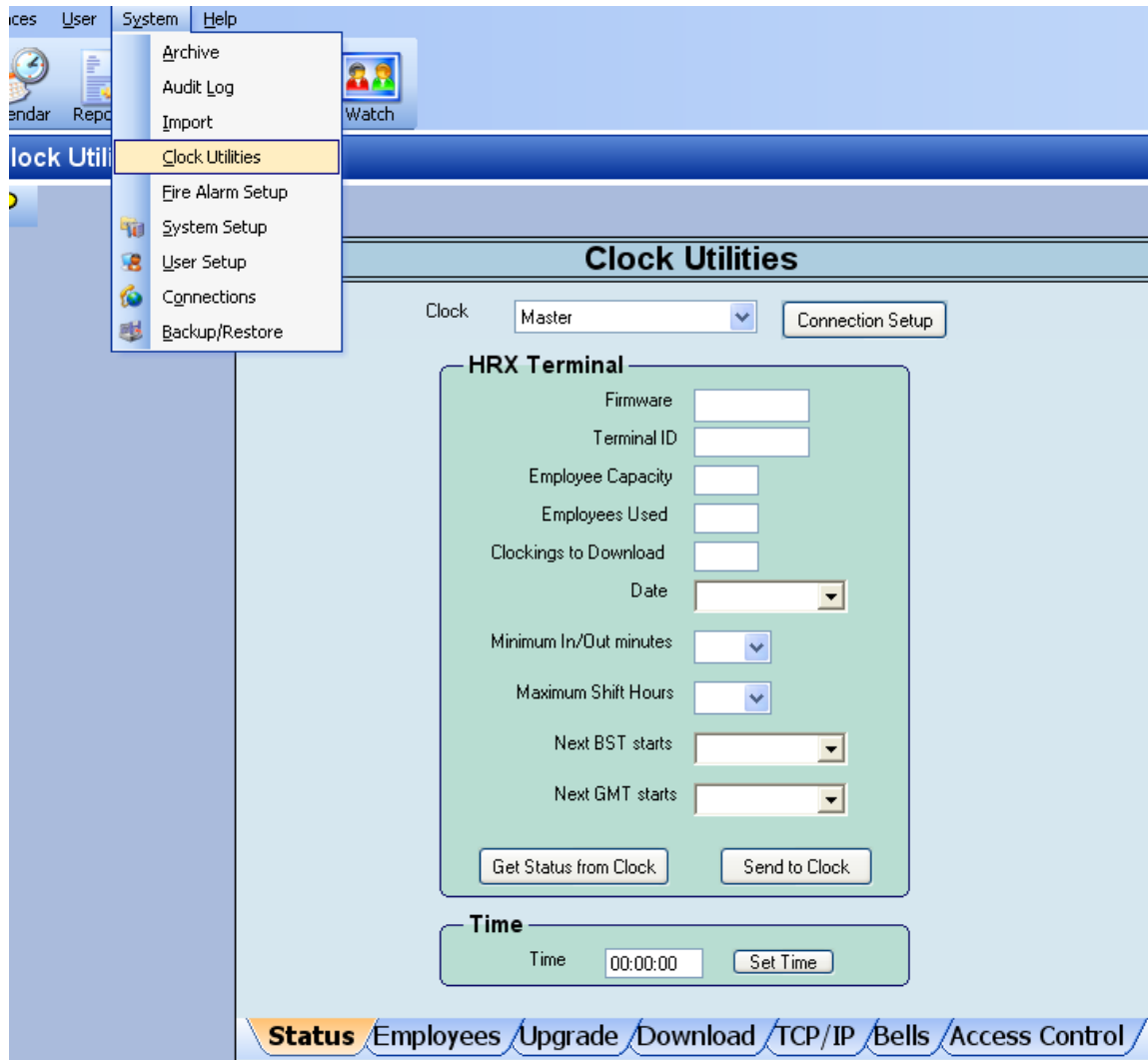
It is very easy to check the settings and make adjustments if necessary.

This guide will step through the procedure.

If you have any questions relating to daylight saving, then please feel free to contact us as [info@egress-sys.co.uk](mailto:info@egress-sys.co.uk)

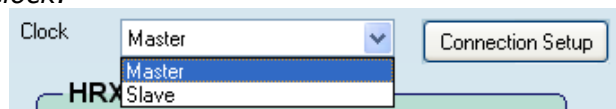
**Step 1:**

From within Focus, click on *System* and then *Clock Utilities* from the menu bar.



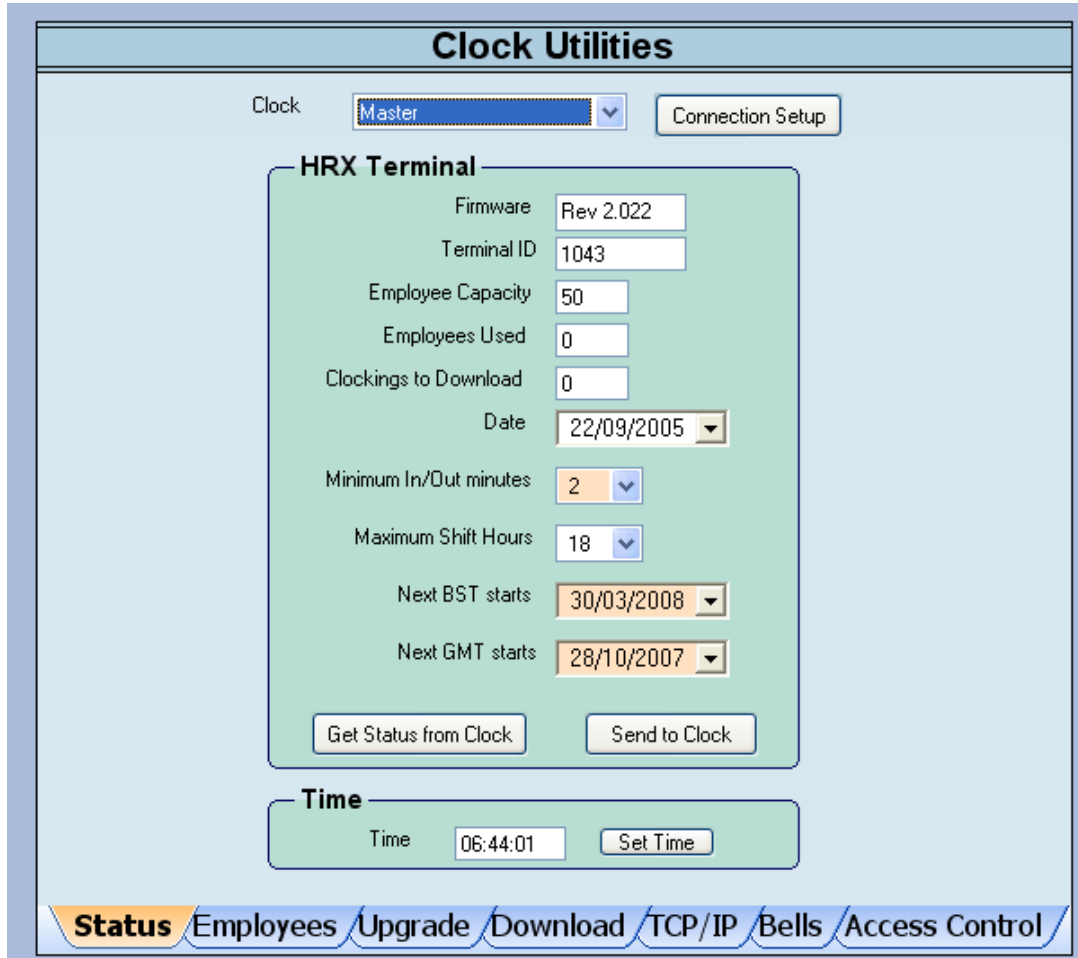
**Step 2:**

If it is not already visible, select the name of the required terminal from the drop down list labelled *Clock*:



**Step 3:**

Click on the *Get Status from Clock* button. This should then populate the remaining fields:



The screenshot displays the 'Clock Utilities' web interface. At the top, there is a 'Clock' dropdown menu set to 'Master' and a 'Connection Setup' button. Below this is the 'HRX Terminal' section, which contains several fields: 'Firmware' (Rev 2.022), 'Terminal ID' (1043), 'Employee Capacity' (50), 'Employees Used' (0), 'Clockings to Download' (0), 'Date' (22/09/2005), 'Minimum In/Out minutes' (2), 'Maximum Shift Hours' (18), 'Next BST starts' (30/03/2008), and 'Next GMT starts' (28/10/2007). At the bottom of this section are two buttons: 'Get Status from Clock' and 'Send to Clock'. Below the HRX Terminal section is the 'Time' section, which shows the current 'Time' as 06:44:01 and a 'Set Time' button. At the very bottom of the interface is a navigation bar with tabs for 'Status', 'Employees', 'Upgrade', 'Download', 'TCP/IP', 'Bells', and 'Access Control'.

---

**Step 4:**

Ensure the value for *Next BST Starts* is correct. e.g. 29/03/2015.\*

Ensure the value for *Next GMT Starts* is correct. e.g. 25/10/2014.\*

If both dates are correct, then no further action is required.

\*Information about these dates can be found at:

<http://www.greenwichmeantime.com/>

If either of these values are wrong, then enter the correct date (clicking on the arrow at the end of each field, opens up a calendar that may be used to select the required date). Once both dates have been corrected, click on *Send to Clock* button.