

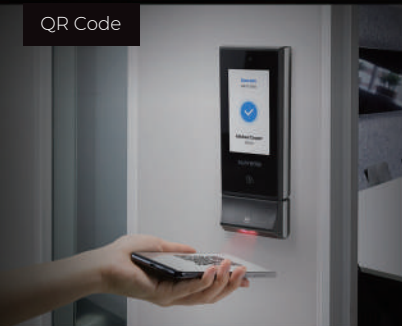
# X-Station 2

Versatile Intelligent Terminal

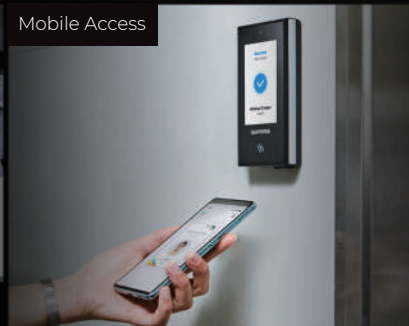


Suprema X-Station 2 is a versatile intelligent terminal that supports various credentials, such as QR codes, Mobile Access, RFID cards and fingerprints, offering the ultimate flexibility in terms of credential options and system design.

QR Code



Mobile Access



RFID Card



Fingerprint










**suprema**  
SECURITY & BIOMETRICS

# X-Station 2

## Versatile Intelligent Terminal

### Benefits at a glance

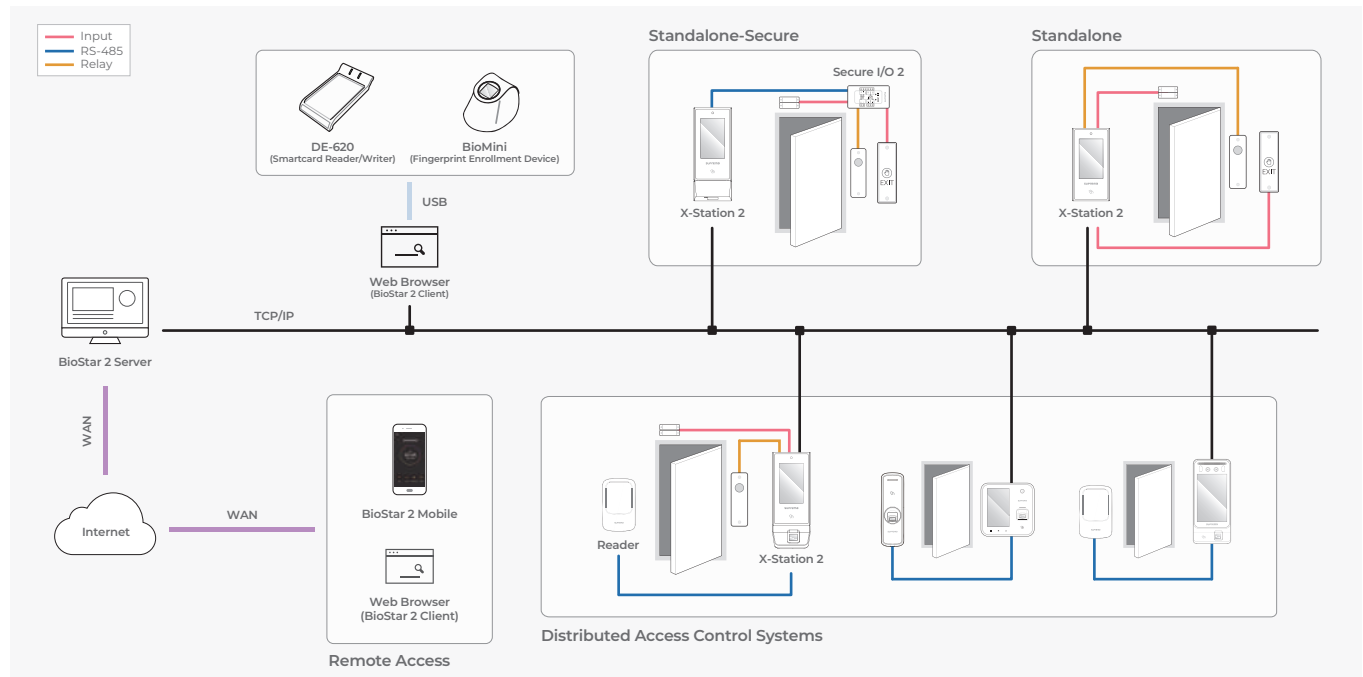
- 
**Multi-technology Terminal with Various Credential Options**
  - Multiple credential options of QR codes, Mobile Access, RFID cards and fingerprints can provide maximum system design flexibility
  - Go mobile, card-less and carefree by using smartphones as credentials
- 
**Leading-edge Fingerprint Recognition**
  - MINEX-Certified Algorithm
  - Fake/Live Finger Detection (SW-based. XS2-ODPB, OAPB only)
  - Max. Credential: 100,000 (1:N)
- 
**Comprehensive RFID Card Compatibility**
  - LF (125 kHz), HF (13.56 MHz) dual-band
  - Reads various card types (EM/MIFARE/iCLASS/DESFire/FeliCa)
- 
**Enhanced Security and Data Protection**
  - Protects data with secure boot process
  - Built-in camera captures image logs for added security
  - Open Supervised Device Protocol (OSDP) for secure bidirectional communication between the terminal and controller
- 
**Designed for easy deployment and management**
  - Power over Ethernet (PoE) enables convenient installation with less wiring
  - Dust-tight and waterproof IP65 protection
- 
**Improved Usability of Intuitive UI on Touchscreen**
  - Quick and easy access to features on 4" wide capacitive touchscreen
  - Customizable display on intuitive GUI
- 
**Expanded Capacity for more users and security logs**
  - Max. 500k users, 5 million text logs, 50k image logs
  - Large memory: 16 GB Flash + 1 GB RAM

### Specifications

| Model Name                 | XS2-DPB  | XS2-QDPB        | XS2-ODPB   | XS2-APB   | XS2-QAPB        | XS2-OAPB   |
|----------------------------|--|-----------------|--|---|-----------------|--|
| RF Option                  | 125 kHz EM & 13.56 MHz MIFARE, MIFARE Plus, DESFire, DESFire EV1/EV2/EV3 <sup>①</sup> , FeliCa   |                 |  | 125 kHz EM, HID Prox & 13.56 MHz MIFARE, MIFARE Plus, DESFire, DESFire EV1/EV2/EV3 <sup>①</sup> , FeliCa, iCLASS SE/SR/Seos |                 |  |
| RF read range <sup>②</sup> | MIFARE, DESFire, iCLASS, HID Prox, EM: 50 mm / FeliCa: 30 mm   |                 |  |   |                 |  |
| Mobile Card                | NFC, BLE   |                 |  |   |                 |  |
| QR/Barcode <sup>③</sup>    | Supported <sup>④</sup>   | Supported       | Supported <sup>④</sup>                                   | Supported <sup>④</sup>  | Supported       | Supported <sup>④</sup>                                   |
| Biometrics                 | N/A  | N/A             | Fingerprint  | N/A   | N/A             | Fingerprint  |
| Scrambled Keypad (PIN)     | Supported  |                 |  |   |                 |  |
| CPU                        | 1.5 GHz Quad Core  |                 |  |   |                 |  |
| Memory                     | 16 GB Flash + 1 GB RAM   |                 |  |   |                 |  |
| Crypto Chip                | Supported  |                 |  |   |                 |  |
| Max. User                  | 500,000 <sup>⑤</sup>   |                 |  |   |                 |  |
| Max. Credential (1:N)      | N/A  | N/A             | 100,000  | N/A   | N/A             | 100,000  |
| Max. Credential (1:1)      | Card: 500,000<br>PIN: 500,000  |                 | Fingerprint:<br>500,000<br>Card: 500,000<br>PIN: 500,000 | Card: 500,000<br>PIN: 500,000   |                 | Fingerprint:<br>500,000<br>Card: 500,000<br>PIN: 500,000 |
| Max. Logs                  | Text 5,000,000 / Image 50,000  |                 |  |   |                 |  |
| LCD                        | 4" IPS color LCD / 480 x 800 pixels  |                 |  |   |                 |  |
| Camera                     | CMOS 2M pixels / 1600 x 1200   |                 |  |   |                 |  |
| Ethernet                   | 10/100 Mbps, auto MDI/MDI-X  |                 |  |   |                 |  |
| RS-485                     | 1 ch Host or Slave (Selectable)  |                 |  |   |                 |  |
| Wiegand                    | 1 ch Input or Output (Selectable)  |                 |  |   |                 |  |
| TTL Input                  | 2 ch Inputs  |                 |  |   |                 |  |
| Relay                      | 1 Relay  |                 |  |   |                 |  |
| USB                        | USB 2.0 (Host)   |                 |  |   |                 |  |
| PoE                        | IEEE 802.3af compliant   |                 |  |   |                 |  |
| IP Rating                  | IP65   |                 |  |   |                 |  |
| Tamper                     | Supported  |                 |  |   |                 |  |
| Power                      | Voltage: 12 Vdc, Current: Max. 0.8 / Voltage: 24 Vdc, Current: Max. 0.5 A  |                 |  |   |                 |  |
| Dimensions (W x H x D, mm) | 82 x 159 x 25.9  | 82 x 203 x 33.9 | 82 x 208.5 x 53 (Bottom) / 25.9 (Top)                    | 82 x 159 x 25.9   | 82 x 203 x 33.9 | 82 x 208.5 x 53 (Bottom) / 25.9 (Top)                    |
| Operating Temperature      | -20°C ~ 50°C (-4°F ~ 122°F)  |                 |  |   |                 |  |
| Certificates               | CE, UKCA, KC, FCC, IC, RCM, BIS, ANATEL, SIG, TELECOM, RoHS, REACH, WEEE (XS2-DPB, QDPB, APB, QAPB) CE, UKCA, KC, FCC, IC, RCM, BIS, ANATEL, SIG, RoHS, REACH, WEEE (XS2-ODPB, OAPB) |                 |  |   |                 |  |

<sup>①</sup> DESFire EV2/EV3 cards are supported by having backward compatibility of DESFire EV1 cards. CSN and smart card functions are compatible with X-Station 2.  
<sup>②</sup> RF read range will vary depending on installation environment. <sup>③</sup> Supports QR/Barcodes composed of up to 32 ASCII code strings.  
<sup>④</sup> Requires a separate license. <sup>⑤</sup> The number of users registered without any credential data.

### System Configurations



### Suprema Inc.

17F Parkview Tower, 248, Jeongjail-ro, Bundang-gu, Seongnam-si, Gyeonggi-do, 13554, Republic of Korea  
 T +82 31 783 4502 W www.supremainc.com



For more information visit our website below by scanning the QR code.  
<https://www.supremainc.com/en/about/contact-us.asp>